

Customer :

customer

Customer part :

customer part

Comment :

Comment

S1=1.57

S2=2.26

Tmax=461

Tp S2=500.0

PI=0.41

HI=89

Sample =1789.30

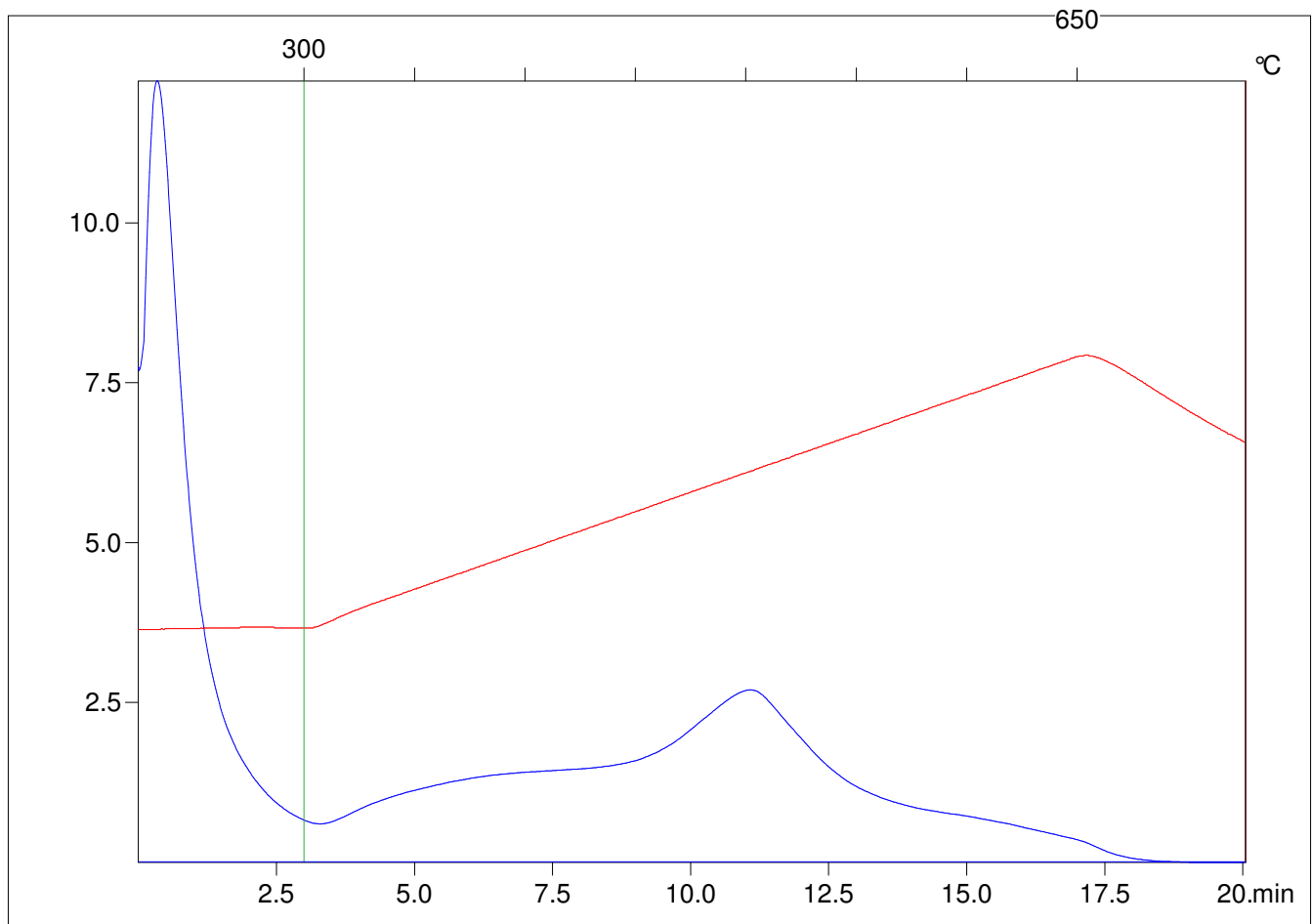
Method =Bulk Rock

Cycle=Basic

KFID(10*9)=1444

Qty =70.2

TOC=2.55



C:\VINC\PK3_1792\PK087.R00 : FID pyrolysis graphic

State

Pyro Status

Oxi Status